



ARCHITECTURAL

ENVIROTECH[®] SYSTEMS LIMITED

Complete Noise Solution



More info:

+91 9311011131

www.EnvirotechLtd.com



NSE

listed in NSE.

**An ISO 9001, 14001 & 45001
CERTIFIED COMPANY**

About ENVIROTECH SYSTEMS

ENVIROTECH SYSTEMS LIMITED is one of the most renowned company for its acoustic solutions. We lead the market with our large range of products and solutions that can cater to almost every acoustic need. Our capability to provide noise control solutions is spread over a number of domains. In our endeavour to reach every nook and corner, it has led us to grow in all directions. We strive to deliver the perfect solution that meets the exact requirement of our client.



ECHO BARRIER®
Environmentally Sound

Pyroguard

VENTURES

CERTIFICATES



IGBC



GRIHA



ISO 9001:2015



ISO 14001:2015



ISO 45001:2018

1. **GROOVED WOODEN SLATS (GW SLATS)**
Page No. 04
2. **WOOD FIBER ACOUSTIC WALL & CEILING PANELS (WOWCEP)**
Page No. 05
3. **FABRIC WRAPPED GLASS FIBER ACOUSTIC PANEL (FABLAM)**
Page No. 06
4. **PERFORATED ACOUSTIC PANELS (WOODPERF)**
Page No. 07
5. **MICRO PERFORATED ACOUSTIC PANELS (MICROPERF)**
Page No. 08
6. **SLEEK CEILING ACOUSTIC PANELS (SONIC SLEEK)**
Page No. 09
7. **ACOUSTIC PU FOAMS (PW ABSORBERS)**
Page No. 10
8. **ACOUSTIC HANGING BAFFLES (SOUND SUSPENDERS)**
Page No. 11
9. **ACOUSTIC HANGING CLOUDS (SOUND SUSPENDERS)**
Page No. 12
10. **PET POLYESTER ACOUSTIC PANELS / ACO BOARD**
Page No. 13
11. **COMPOSITE ACOUSTIC PANELS (COPCOM)**
Page No. 14
12. **SOUND DAMPENING SHEET**
Page No. 15
13. **SOUND BLOCK ACOUSTIC PANELS**
Page No. 16
14. **SOUND BLOCK PARTITION ACOUSTIC TREATMENT**
Page No. 17
15. **ACOUSTIC SLIDING FOLDING PARTITION**
Page No. 18
16. **ACOUSTIC VERTICAL FOLD PARTITION (EVF)**
Page No. 19
17. **ACOUSTIC GLASS SLIDING FOLDING PARTITION**
Page No. 20
18. **ACOUSTIC DOORS & FIRE DOORS**
Page No. 21
19. **NOISE BARRIER**
Page No. 22
20. **POLYCARBONATE NOISE BARRIER**
Page No. 23
21. **METALLIC NOISE BARRIER**
Page No. 24
22. **ECHO BARRIER**
Page No. 25
23. **ACOUSTIC ENCLOSURE & ANECHOIC CHAMBER**
Page No. 26
24. **TEST CERTIFICATES**
Page No. 24
25. **PROJECT IMAGES**
Page No. 28
26. **CLIENT LIST**
Page No. 29
27. **CONTACT US**
Page No. 30

Grooved Wooden Slats (GW SLATS)

Groove Size and Pitch

ENVIROTECH SYSTEMS Grooved Wooden Slats (GW Slats) having Multiple Pitch options G13/G14/G16/G18/G21/G24/G28/G32/G56 and Groove size 2/3/4/5mm as approved by the Architect/ Acoustic Consultant. 128x2440, 192x2420, 600x2440mm and thickness 15/16/17mm. GW Slats has 10 mm DIA Helmholtz Perforated Pattern on its back and covered with Black colour Non Woven Acoustic Fleece Fabric.



G 13/3



G 21/3



G 28/3



G 32/3



GW Slats Panel of size:

192X2420

128X2440

600X2440

Material

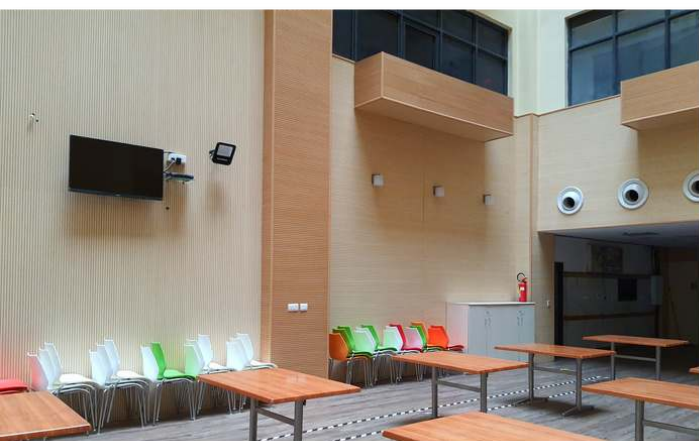
GW Slats made of Prelaminated High/Medium Density Fiber Board with minimum 700–800 Kg/m³ density. Facing Prelaminated approved shade & finish and a melamine balancing layer on the reverse side.

Performance

GW Slats system having NRC of 0.90 as per IS:8225–1987, ISO:354–2003 and ASTM 423–90. GRIHA V.2019 criterion:11, GRIHA V.2015 criterion: 11 & GRIHA V.3.1 criterion:29

Application

Auditorium, Conference Room, Office, Gym, School, lecture Hall Etc.



Wood Fiber Acoustic Wall & Ceiling Panels (WOWCEP)

Wood Fiber Acoustic Panel

Wood Fiber Acoustic Wall & Ceiling panels are made of 1 mm thick wood fiber bonded with magnesite cement binder. Wood fiber panel having density 400kg/m³.

WOWCEP Size:

Size of the panel 600x600/1200 mm. Wood Fiber Acoustic Panels are available in natural color and having thickness 15/20/25/50 mm.

Technical

Density - 400kg/m³

Core - Wood Fiber

Light (%) - 80%

Green (VoC) - Low



Fire Resistant



Termite and Borer
Resistant



Eco Friendly

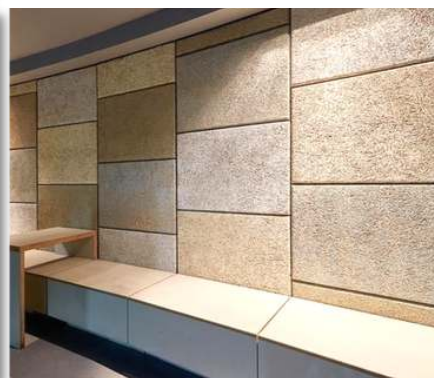
Performance

Acoustic NRC = 0.90, Eco-friendly, Fire Ratings Class 1, Thermal Resistance, Water Vapour Diffusion Resistant.

GRIHA V.2019 criterion:11, GRIHA V.2015 criterion: 11 & GRIHA V.3.1 criterion:29

Application

Auditorium, Conference Room, Office, Gym, School, lecture Hall Etc.



Fabric Wrapped Glass Fiber Acoustic Panel (FABLAM)

ENVIROTECH SYSTEMS Fabric Wrapped Glass Fiber Acoustic Panel (FABLAM) is constructed of a single core construction of dimensionally stable square edge rigid glass wool of higher density.

FABLAM Size:

The thickness of the panel shall be 25mm or 50mm as approved by the Architect/ Acoustic Consultant. The Size can be 600x600mm, 600x1200mm as approved by Architect.

600x600

600x1200

Technical

Core Material – Glass Fiber

Edge – Square

Material

High Density Glass Fiber wrapped with Acoustic Fabric. Having Multiple color options available.

Performance

Fabric Wrapped Glass Fiber Acoustical Wall Panels shall have an NRC of 1.0 in accordance with IS:8225/ISO:354/ASTM 423C for (Type “E” Mounting). Glass Wool Panel have Class “A” flame spread rating of 25 or less in accordance with ASTM E-84. GRIHA V.2019 criterion:11, GRIHA V.2015 criterion: 11 & GRIHA V.3.1 criterion:29

Application

Auditorium, Conference Room, Office, Gym, School, lecture Hall Etc.



Perforated Acoustic Panels (WOODPERF)

ENVIROTECH SYSTEMS WOODPERF Prelaminated Perforated Acoustic Wall and Ceiling Panels, made of Prelaminated High-Quality Medium Density Fiber Board of 600-800kg/m³. The WOODPERF Acoustic Panels having various thickness 12/15/16mm with a perforated pattern hole dia 08/28mm as per acoustic design for better absorption, 08mm dia perforation and 28mm pitch c/c with Square Edge and side line Groove for insert clip fixing.

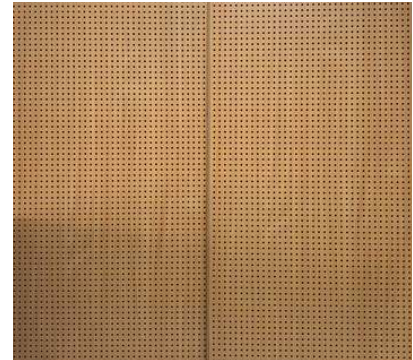
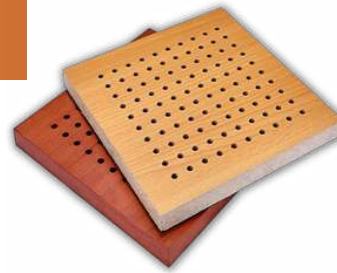
WOODPERF Size:

ENVIROTECH SYSTEMS WOODPERF Size Can be 600x600mm, 600x1200mm, 600x2420mm and Thickness shall be 12mm, 15mm, 16mm, and 17mm. Colour shade as per choice of the Consultant / Architect's design. The WOODPERF acoustic panels to be backed with black colour acoustic fleece.

600X600

600X1200

600X2420



Technical

Core Material – HDF / MDF

Hole Diameter- 3mm/06mm/08mm/10mm

Density- 600-800kg/m³

Edge – Square

NRC – 0.90

Finish- Variety of pre-laminated board shades with Matt finish, Melamine Glossy Finish. Having 50+ color options available.

GRIHA V.2019 criterion:11, GRIHA V.2015 criterion: 11 & GRIHA V.3.1 criterion:29

Application

Auditorium, Conference Room, Office, Gym, Malls, Hotels, School, lecture Hall, Theaters, Studio, Homes, Banquet hall Etc.



Micro Perforated Acoustic Panels (MICROPERF)

ENVIROTECH SYSTEMS Micro Perforated Acoustic Panels (MICROPERF) are made of 1mm thick Micro Perforated Mica Laminate Sheet and base of High Density Perforated MDF/HDF/WPC Boards with rigid fixation can be installed over Ceiling and Wall.

MICROPERF Size:

ENVIROTECH SYSTEMS (MICROPERF) Micro Perforated Acoustic Panels Size 595x595mm, 600x1200mm, 600x2420mm, and 16mm Thickness with a square edge as per acoustic design for wall and 12mm for Ceiling.

595X595

600X1200

600X2420

Technical

Core Material – High-Density Perforated MDF/HDF/WPC Boards

Hole Diameter– 0.60mm and 1 mm at a distance of 02 mm

Density– 550-800kg/m³

Edge – Square, Kerfed, Micro

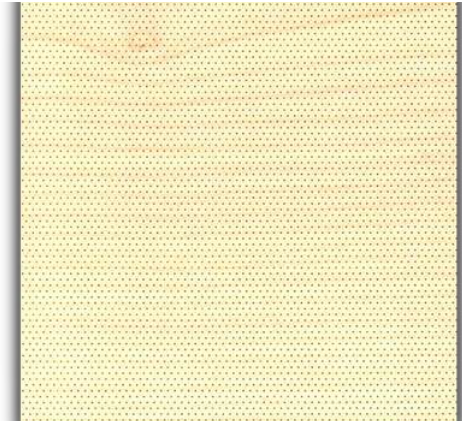
NRC– 0.86

Finish– Having 50+ color options available. shades with Matt finish, Melamine Glossy Finish.

GRIHA V.2019 criterion:11, GRIHA V.2015 criterion: 11 & GRIHA V.3.1 criterion:29

Application

Auditorium, Conference Room, Office, Gym, Malls, Hotels, School, lecture Hall, Theaters, Studio, Homes, Banquet hall Etc.



Sleek Ceiling Acoustic Panels (Sonic Sleek)

ENVIROTECH SYSTEMS Sleek Ceiling Acoustic Panels (Sonic Sleek) having 6mm thickness and made of Calcium Silicate, Glass Fiber Tissue Paper finish with Absorptive Microfiber Coating on the front side and Black Colour 120GSM Acoustics Fleece on the back side, thus making it Acoustically Absorptive, Acoustic panels can be backed with 50mm Thick Rockwool 64 kg/m³ Density confirming to IS 8183 for best NRC value.

Sonic Sleek Size:

595X595X6mm

Sleek Ceiling Acoustic Panel size 595x595x6mm with a square edge .

Technical

- Core Material – Calcium Silicate
- Density- 1040kg/m³
- Edge – Square
- NRC- 0.70

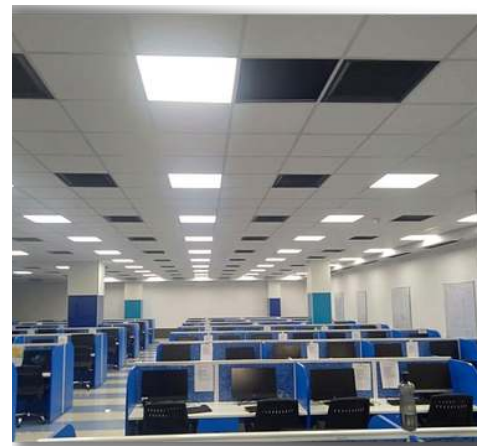
Finish:

Having Multiple color options available in Paint Finish.

GRIHA V.2019 criterion:11, GRIHA V.2015 criterion: 11 & GRIHA V.3.1 criterion:29

Application

Auditorium, Conference Room, Office, Gym, School, Lecture Hall, Theaters, Banquet Hall Etc.

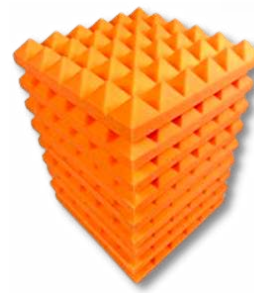
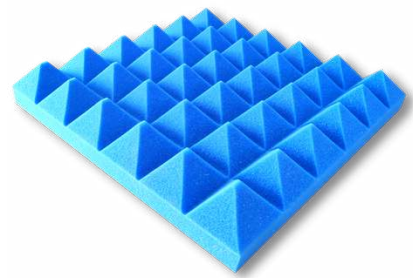


Acoustic PU Foams (PW ABSORBERS)

Envirotech provides superior quality high sound absorption polyurethane foam (PU Foam) weakens the sound waves hitting it and minimizes the transmission of noise having NRC (Noise Reduction Co-efficient) value of 0.8. This acoustic absorption foam is known for their fire retardancy and sound absorption characteristics. These are widely used in hotel, ballroom, recording room, club, architectural decoration, industrial workshop, etc. This foam can be easily glued to any other material such as non-woven fabric, gypsum sheet, sun mica, glass fiber.

PW ABSORBERS available in plain sheets, Wedge and pyramid shape:

- Plain sheet size -1000mm x 2000mm and 25 / 50 mm thick sheets.
- Wedge – 300 mm x 300mm / 600mmx 600mm and 50 , 100 , 200, 400, 600 ,900mm thickness
- Pyramid – 300 mm x 300mm / 600mmx 600mm and 50 , 100 , 200, 400, 600 ,900mm thickness



Acoustic Hanging Baffles (Sound Suspenders)

ENVIROTECH SYSTEMS Acoustic Hanging Baffles (Sound Suspenders) made of Acoboard and Woodperf Acoustic Panels with rigid fixation the internal built of the acoustic baffles as per the size (1200*200*30mm) Top side flat and all the three side 25mm blank cob drop (as internal MDF baffle size is 1150x175mm utilized). To be installed with Inside Clip System or Uni Strut Channel and Thread Rod. The Acoustic Baffle Blades will be factory made. Size of the baffles 1200x200x30mm or as per customized size selected by architect's for achieving the best NRC value.

Technical Specifications: -

Material: Acoboard and Woodperf Acoustic Panels

Size: 1200*200*30mm

Thickness: 25mm, 30mm, 40mm, & 50mm

Shape: Squire, Rectangular, Hexagonal, Round, Oval or any custom Shape and size

Colors: White, Black, Marble Light Blue, Light Grey, Graphite, Beige, Burgundy, Pure Blue, Navy Blue, Hunter Green

Types Acoustic Hanging Baffles

- Wooden Acoustic Baffle
- Fabric Acoustic Baffle
- Polyester Acoustic Baffle

GRIHA V.2019 criterion:11, GRIHA V.2015 criterion: 11 & GRIHA V.3.1 criterion:29

Application

Auditoriums, Conference Rooms, Cinema Halls, Theatres, Music Hall, Stadium, Lecture Hall, Library, Multi-function Hall, Hotels, Museums, Meeting Rooms, Business, Canteens, Sports stadium, Industrial spots, office Etc.



Acoustic Hanging Clouds (Sound Suspenders)

ENVIROTECH SYSTEMS Acoustic Hanging Clouds (Sound Suspenders) provides best NRC value and aesthetically pleasing look for Ceiling. Acoustic hanging Clouds having smooth finish for better aesthetics and controlling the sound reverberation and echo from Top and Bottom both the angles.

ENVIROTECH SYSTEMS Acoustic hanging Clouds are high performance acoustical products with an exceptional visual appearance through its design and shapes.

Technical Specifications: -

- Material: Acoustical Hanging Clouds made of compressed polyester fiber boards and MDF batten with rigid fixation.
- NRC: 0.90
- Thickness: 30/40/50mm or as per Design.
- Size: 600x600mm, 600x1200mm, 1200x1200mm, 600/900mm, 1200mm or as per design.
- Design/Shape: Square, Circular, Triangular, Hexagonal.
- Finish: Variety of shades having 20+ colour option available.

GRIHA V.2019 criterion:11, GRIHA V.2015 criterion: 11 & GRIHA V.3.1 criterion:29

Application

Auditoriums, Conference Rooms, Cinema Halls, Theatres, Music Hall, Stadium, Lecture Hall, Library, Multi-function Hall, Hotels, Museums, Meeting Rooms, Business office Etc.



PET Polyester Acoustic Panels / Aco Board

PET Polyester Acoustic Panels (Aco Bord) are acoustically absorbent panels made from 100% PET plastic.

- Noise Absorption Coefficient: With NRC Systems =0.85
- Surface: Standard, Grooved and Printed
- Standard size & thickness: 1220x2440x9mm
- Density: 200kgs/m³
- Material: Polyester Fiber



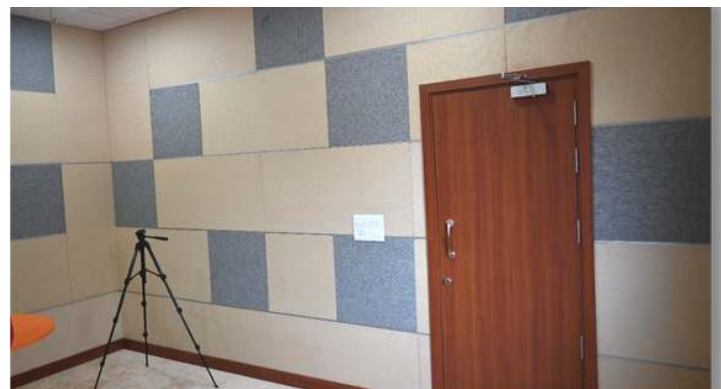
GRIHA V.2019 criterion:11, GRIHA V.2015 criterion: 11 & GRIHA V.3.1 criterion:29

Composite Acoustic Panels (COPCOM)

Envirotech Systems (COPCOM) Composite Acoustic Panel having of size 600x600/1200/2400 mm and made of WOODPERF Acoustic Panel and ACOBOARD. WOODPERF Acoustic Panel having 16mm thickness with a Perforated Pattern on its back circular Dia 10 mm and Front Covered with ACOBOARD Acoustic Panel pasted by rigid fixation as per acoustic design for better absorption. The COPCOM Acoustic Panel FR rating Class -1. The COPCOM Acoustic Panels Colour Pattern shall be as per Consultant / Architect's design. The COPCOM acoustic panels to be backed with black acoustic fleece. The COPCOM acoustic panels top sheet ACOBOARD having 200kg/m³ density as per acoustic design and desired shade as per Architect's approval. COPCOM Acoustic Panel having square edge as per acoustic design or tapered cut to produce a 'V' joint shape at all four/two ends of 6mm as per Architect's choice. COPCOM Acoustic Panels to be fixed on GI Channel Framework/ Aluminum Extruded Keel with Inside Clip or as per the instructions lay down by the manufacturer. Cavity of grid shall be filled with Rockwool density 64 kg/m³ confirming to IS 8183 for best noise absorbent value 0.90. GRIHA V.2019 criterion:11, GRIHA V.2015 criterion: 11 & GRIHA V.3.1 criterion:29

Application

Theatres, Home theatres, Auditoriums, Concert halls, Gymnasiums, Commercial spaces such as Conference rooms, Meeting rooms, Common areas, Recording Studios, Home audio-visual rooms, etc.



Sound Dampening Layer

ENVIROTECH SYSTEMS Sound Dampening Layer High-density polymer-based, asphalt-free, synthetic soundproofing membrane of 5mm Thick offers good acoustic insulation in different building elements. GRIHA V.2019 criterion:11, GRIHA V.2015 criterion: 11 & GRIHA V.3.1 criterion:29

Advantage:

- High acoustic insulation, combined with soft, flexible elements.
- High sound damping capacity on metal surfaces.
- Flexible.
- Easy to handle and adaptable to uneven surfaces.
- Easy to cut with a knife or scissors
- Good bonding to most of the types of surfaces.
- Acts as a vapor control layer
- Cold- and heat-resistance.
- Excellent ageing resistance.

Technical Specifications:

- Density: 1700 Kg/M³
- Tensile strength: >5.9 N/MM²
- Elongation: > 280 %
- Compression Set: 11%
- Flame Retardance: 100degree c
- Resistance to Liquids Value Changes (%) After Impression in Liquid B: +44.6
- Shore hardness A: 67
- Color: Black
- Sound Reduction Index, Rw: 26 dB
- 1700kg/m³ Density, Sound Reduction Index, Rw-26, as per IS 9901-3:2019 DIN52210-1:1984/ISO 140-3:1995 (AMD 2004) ISO 140-4: 1998/ISO 16283-1:2014/ISO 10140-2: 2010/ ASTM E90-09/ISO 717-1:2020.



Sound Block Acoustic Panels

Envirotech Systems Sound Block Acoustic Panels are designed for STC Controlling. Sound Block Acoustic Panels have a thickness of 25mm thick. Envirotech Sound Block Acoustic Panels, made of Sound Deadening Boards and Sound Dampening Barrier Sheet providing up to noise reduction property 26 dB, Sound Dampening Barrier Sheet sandwiched between the Sound Deadening Boards fixed by rubber-based adhesive for rigid fixation. Sound Block Acoustic Panels size 600x1200mm, 1200x1200mm, 1200x2400mm with square edge high-density board. Having Water Resistant, Fire Resistant, and Termite Resistant, Increase the Thermal Properties as per the architect's approval. The Sound Block Acoustic Panels are anti-sag and are to be installed on the Wood/GI framework. Sound Block Acoustic Panels STC value 26 dBA, as per CSIR-NPL- 1700kg/m³ Density, Sound Reduction Index, Rw-26, as per IS 9901-3:2019 DIN52210-1:1984/ISO 140-3:1995 (AMD 2004) ISO 140-4: 1998/ISO 16283-1:2014/ISO 10140-2: 2010/ ASTM E90-09/ISO 717-1:2020.



Sound Block Partition Acoustic Treatment

Envirotech Systems 125mm thick Sound Block Partition Acoustic Treatment. Envirotech Composite System is designed for STC Controlling by using Sound Block Acoustic Panels. Sound Block Partition Composite System, made of Sound Deadening Boards and Sound Dampening Barrier Sheet providing up to noise reduction property 45 dB, Sound Dampening Barrier Sheet sandwiched between the Sound Deadening Boards fixed by rubber-based adhesive for rigid fixation. Sound Block Partition Acoustic Treatment Panel size 600x1200mm, 1200x1200mm, 1200x2400mm with square edge high-density board. Having Water Resistant, Fire Resistant, and Termite Resistant, Increase the Thermal Properties as per the architect's approval. The Sound Block Partition Acoustic Treatment Panel is anti-sag and is to be installed on a Wood/GI framework distance of 600x600mm/600x900mm, cavity is filled with 75mm thick Rockwool 80kg/m³ density with Sound Dampening Barrier Sheet, 1700kg/m³ Density, Sound Reduction Index, Rw-26, as per IS 9901-3:2019 DIN52210-1:1984/ISO 140-3:1995 (AMD 2004) ISO 140-4: 1998/ISO 16283-1:2014/ISO 10140-2: 2010/ ASTM E90-09/ISO 717-1:2020. Fixing of the Sound Block Partition Acoustic Treatment Panel as per the instruction lay Down By the manufacturer. GRIHA V.2019 criterion:11, GRIHA V.2015 criterion: 11 & GRIHA V.3.1 criterion:29



Acoustic Sliding Folding Partitions

ENVIROTECH SYSTEMS Acoustic Sliding Folding Partition is a flush acoustic folding for space management, which enables utmost operational ease to customers. It's hung from a ceiling track or propped up with the help of a low profile surface mounted floor track.

Double Acoustic seals fit around these sliding folding partition walls to impart them highest level of acoustic integrity. More so, this fitting also achieves the desired acoustic integrity between flanking rooms. GRIHA V.2019 criterion:11, GRIHA V.2015 criterion: 11 & GRIHA V.3.1 criterion:29

Technical Specifications:

- Basic Material: MDF
- Panel Weight : 37 Kg/m²
- Sound Transmission Class (STC): 55
- Outer Frame Material: Aluminium
- Retractable range of top/bottom seals: 22.5mm
- (Min/Max) width: 750 / 1230mm
- (Min/Max) height: 2400 / 6000mm
- Thickness: 85/100mm
- Finish: Raw MDF, Laminate, Veneer Wall Paper, Fabric, Acoustic Board 9mm.

Application

Auditorium, Shops, Malls, Hotel, Garage, Restaurant, Conference Room, Office, Gym, School, lecture Hall, Theaters, Banquet hall Etc.



Acoustic Vertical Fold Partition (EVF™)

Envirotech VERTIFOLD (EVF™) are specially engineered acoustic walls that provide a unique way to subdivide space by means of vertical retractable folding panels. The panels are completely automatic wherein they retract into the ceiling, vertically and get stacked neatly and hidden from sight, which a simple push of a button. There are no floor or wall tracks required. Envirotech Systems is the only manufacturer of this product in the entire Country. The product can be customized in finishes as per the client's choice.

The EVF series is developed to meet the acoustic challenges of geometrically variable spaces ranging from simple offices, classroom types to complex structures like multipurpose halls and auditoriums especially with sloped or stepped floors.

The panels are completely automatic wherein they retract into the ceiling, vertically and get stacked neatly and hidden from sight, which a simple push of a button. There are no floor or wall tracks required. The product has premium STC rating of 51.

GRIHA V.2019 criterion:11, GRIHA V.2015 criterion: 11 & GRIHA V.3.1 criterion:29

Application

Auditorium, Shops, Malls, Hotel, Garage, Restaurant, Conference Room, Office, Gym, School, lecture Hall, Theaters, Banquet hall Etc.



Acoustic Glass Sliding Folding Partition

ENVIROTECH SYSTEMS Glass Sliding Folding Partitions is a product that offers you nearly limitless possibilities for the design of your space. It gives you a high-quality appearance and creates bright, open spaces. It enables you to work undisturbed and in peace, which is an ideal condition for an office or any other space.

Glass partition made out of 12mm thick Glass, Aluminum Channel Profile, Having Fixed Telescopic panels at the end of the panel and having retractable seals at Top and Bottom to control the sound. Glass Sliding Partition max height is up to 3000mm, Weight up to 40 kg, Door width max 1100mm. GRIHA V.2019 criterion:11, GRIHA V.2015 criterion: 11 & GRIHA V.3.1 criterion:29.

Hardware Specifications:

- Full corrosion resistant construction
- 316 Marine grade SS part for improved Strength and Maximum Corrosion resistance
- Precision bearing top to bottom roller to reduce rolling resistance.

Application

Auditorium, Conference hall, Hotels, Malls, Educational Buildings, Office, Cafes, Meeting Rooms, Restaurant, Corporate, Banquet halls etc.



Wooden & Metal Acoustic Doors

ENVIROTECH SYSTEMS Acoustic Doors are well-approved and tested by labs. ENVIROTECH make Wooden & Metal Acoustic doors as per customer requirements.

Technical Specifications: -

- Door Type: Wooden & Metal Acoustic Door
- Door Frame: 110 x 100mm & 150 x 125mm
- Shutter Thickness: 60mm & 86mm or customize
- Door Size: 900x2100, 1800x2100, 900x2000, 1800x2000mm
- Infill Material: Soundproof Insulation material
- Acoustic performance: 37 STC & 45 STC
- Tested from: National Physical Laboratory

GRIHA V.2019 criterion:11, GRIHA V.2015 criterion: 11 & GRIHA V.3.1 criterion:29



Wooden & Metal Fire Doors

ENVIROTECH SYSTEMS Wooden & Metal Fire Door offers all the benefits of standard Metal Fire Door, but with the additional bonuses of fire-resistant metal doors.

Technical Specifications:

- Door Type: Wooden & Metal Fire Door
- Fire Rating: 60mins / 120 mins
- Shutter Thickness: 50 mm / 55 mm
- Frame Size: 120mm x 70 mm - for 60 mins, 140mm x 70 mm - for 120 mins
- Infill Material: Fireproof material
- Testing standards: BS 476 Part 20-22, IS 3614 Part 2
- Tested from: QMC govt Lab / Haryana

Application:

Home Theatre, Auditorium Acoustics, DJ room acoustics, Audiometric Room, GRIHA V.2019 criterion:11, GRIHA V.2015 criterion: 11 & GRIHA V.3.1 criterion:29



Polycarbonate Noise Barrier

The standard Polycarbonate Noise Barriers designed to achieve 22 STC to 36 STC rating and the same has been confirmed during laboratory test.

Technical Specifications:

- **Flexibility:** The polycarbonate / acrylic sheets are versatile.
 - **Light transmission:** The translucent materials provide good light transmission of up to 90%.
 - **Noise reduction:** The Polycarbonate noise barrier are the most effective at sound reduction and can reduce sound up to 36 dB(A).
 - **Fire resistant:** It has a Class B fire rating.
- GRIHA V.2019 criterion:II Certified



Metallic Noise Barrier

Metallic noise barriers which comprise the great majority of noise barriers are generally located at the edge of the road to reflect traffic noise. The height of these barriers is usually greater than other types. Often traffic noise levels increase for the vehicle occupant.

Technical Specifications:

- Weather proof
- Non-corrosive
- Strong & durable
- Soundproofing
- Fire retardant
- Noise Absorbing

GRIHA V.2019 criterion:II Certified



ECHO Barrier

ENVIROTECH SYSTEMS Introducing Quality product from ECHO BARRIER. The Echo Barrier is a very light weight (2.2 kg/m²) portable acoustic barrier that offers excellent noise reduction and absorption. Echo Barrier's patented Acoustic technology, offers noise reduction between 15 to 32 dB in field conditions.

GRIHA V.2019 criterion:II Certified

Application:

- Construction site Noise Barrier
- Road Noise Barrier
- Railway Noise Barrier



Acoustic Enclosure

ENVIROTECH SYSTEMS Acoustic Enclosures are specially designed enclosed units for equipment that has a high reverberation and noise level. We have different acoustic enclosures for different kind of units which cater to the specific need. The noise levels are according to the industrial application CPCB norms and as per ISO 14001 standards.

All Product Range:

- Acoustic Enclosure For DG Set
- Acoustic Enclosure For Turbine
- Acoustic Enclosure For Power Plant
- Acoustic Enclosure For Machine
- Acoustic Enclosure For Blower
- Acoustic Enclosure For Compressor
- Acoustic Enclosure For Fin Press
- Acoustic Enclosure For Punch Press
- Acoustic Drop Over Canopy
- Acoustic Blanket Enclosures
- Oxygen Plant Noise Control
- Steel Plant Noise Control



Anechoic Chamber

ENVIROTECH SYSTEMS provides Anechoic Chamber based on ISO 3744, ISO 3745, and ANSI S12.55. We avail a complete range of services from design to fabrication and installation of the Anechoic Chambers.

All Product Range:

- | | |
|-----------------------|---------------------------------------|
| • Anechoic Chamber | • Semi-Anechoic Chamber |
| • Noise Test Booth | • Mini/Portable Anechoic Chamber |
| • NVH Test Chamber | • Engine test cell Acoustic Treatment |
| • Audiometric chamber | |



Test Certificates



Wooden Slats



Fabric Panel



Micro Perforated



Acoustic Panel



Acoustic Door



Fire Door



Acoustic Window



IIT Vetting Report



Mass Loaded Vinyl



Acoustic Partition



Noise Barrier



GRIHA



Some of Our Valued Client





ENVIROTECH[®] SYSTEMS LIMITED

Talk to us



+91 9311011131



sales@envirotechltd.com

Landline :

+91-120-4337633, 4337439

Phone:

+91- 8506098892, 9582795557

Website:

www.EnvirotechLtd.com

Visit Our Websites

www.EnvirotechLtd.com
www.EnvirotechAcoustics.com
www.EnvirotechBarrier.com
www.EnvirotechPartitions.com
www.EnvirotechDoors.com
www.EnvirotechLouvers.com

Corporate Office :

B-1A/19, Commercial Complex, Sector 51, Noida –
201307, Uttar Pradesh, India

Factory:

Plot No-345-346-347, Ecotech-1 (Extension), Greater
Noida-201308, Uttar Pradesh, India



VENTURES

CERTIFICATES



IGBC



GRIHA



ISO 9001:2015



ISO 14001:2015



ISO 45001:2018